

Trays

• Material:
Clear Polycarbonate

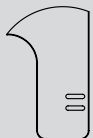
• Dimensions:

Child: 11" - 12" wheelchair
 Junior: 13" - 14" wheelchair
 Teen: 15" - 16" wheelchair
 Adult: 17" - 18" wheelchair
 X-Wide: 19" - 20" wheelchair
 2X-Wide: 21" - 22" wheelchair

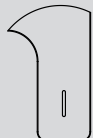
• Hardware Sold Separately

Alterations
Please use Custom Tray Order Form

Round Body
 Control Cutout (4"x 8")
 Toggle Slots
 Strap Slots



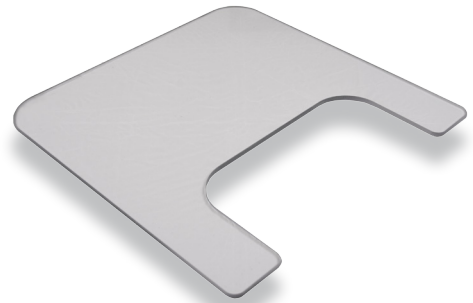
Toggle Slots



Strap Slots

3/8" Polycarbonate Tray

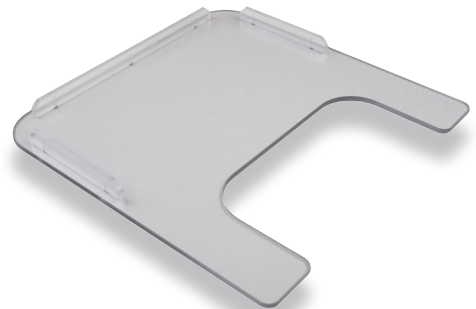
DESCRIPTION	ITEM #
Child.....	053603
Junior.....	053703
Teen.....	053803
Adult.....	053903
X-Wide.....	054403
2X-Wide.....	054503



3/8" Polycarbonate Tray

Polycarbonate Rim

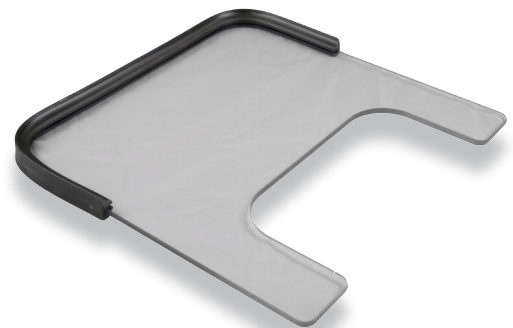
DESCRIPTION	ITEM #
Child.....	053613L
Junior.....	053713L
Teen.....	053813L
Adult.....	053913L
X-Wide.....	054413L
2X-Wide.....	054513L



3/8" Polycarbonate Tray

Rubber Rim

DESCRIPTION	ITEM #
Child.....	053605R
Junior.....	053705R
Teen.....	053805R
Adult.....	053905R
X-Wide.....	054405R
2X-Wide.....	054505R



3/8" Polycarbonate Tray

Blank

DESCRIPTION	ITEM #
Child.....	053614
Junior.....	053714
Teen.....	053814
Adult.....	053914
X-Wide.....	054414
2X-Wide.....	054514



1/4" Polycarbonate Tray



DESCRIPTION	ITEM #
-------------	--------

Child.....	054001
Junior.....	054101
Teen.....	054201
Adult.....	054301
X-Wide.....	054302

1/4" Polycarbonate Tray

Polycarbonate Rim



DESCRIPTION	ITEM #
-------------	--------

Child.....	054003P
Junior.....	054103P
Teen.....	054203P
Adult.....	054303P
X-Wide.....	0543031P

1/4" Polycarbonate Tray

Polycarbonate Rim, Blank



DESCRIPTION	ITEM #
-------------	--------

Child.....	0543036P
Junior.....	0543035P
Teen.....	0543034P
Adult.....	0543032P
X-Wide.....	0543033P

3/8" Wood Tray

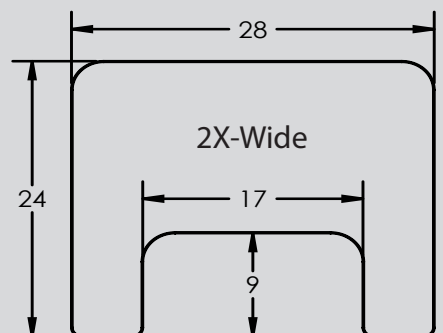
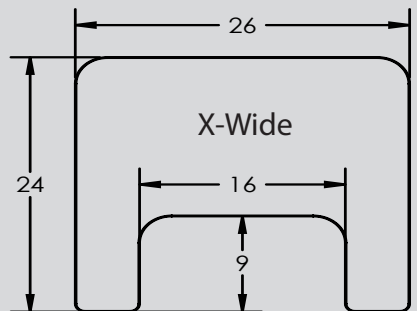
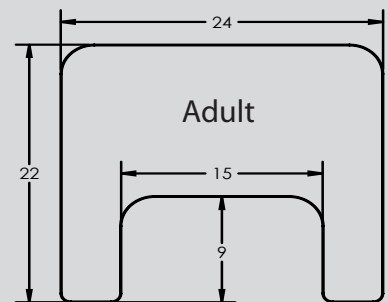
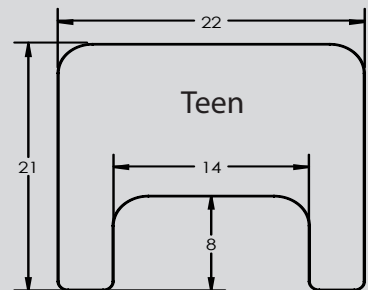
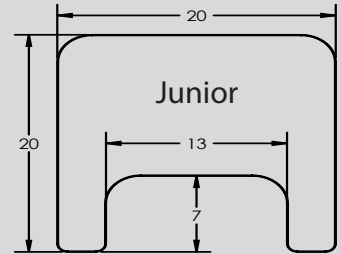
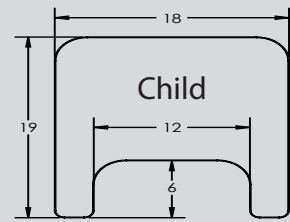
Wood Rim



DESCRIPTION	ITEM #
-------------	--------

Child.....	05464
Junior.....	05471
Teen.....	05481
Adult.....	05491
X-Wide.....	054903
2X-Wide.....	054904

Trays



Trays

- **Material:**
3/8" Clear polycarbonate, rubber rim
- **Dimensions:**
22"x 13"
- **Included Hardware:**
Attached mounting hardware

Polycarbonate Half Tray

DESCRIPTION	ITEM #
-------------	--------

Flip Away, Right Side.....	0550R
Flip Away, Left Side.....	0550L
Stationary, Right Side.....	055001R
Stationary, Left Side.....	055002L



- **Material:**
3/8" Birch wood, vinyl cover, 1" foam
- **Dimensions:**
22"x 13"
- **Included Hardware:**
Attached mounting hardware

Padded Half Tray

DESCRIPTION	ITEM #
-------------	--------

Flip Away, Right Side.....	055003R
Flip Away, Left Side.....	055004L
Flip Down, Right Side.....	847102003610
Flip Down, Left Side.....	847102003627



- **Material:**
Vinyl cover, 1" foam
- **Description:**
Removable padding, attached with adhesive velcro.
- **Included Hardware:**
Adhesive velcro

Tray Padding

DESCRIPTION	ITEM #
-------------	--------

Child.....	05398
Junior.....	053981
Teen.....	05399
Adult.....	053910
X-Wide.....	0539101
2X-Wide.....	053911



- **Description:**
24" Wide
23" Deep
Cutout: 15" x 9"

Molded Tray

DESCRIPTION	ITEM #
-------------	--------

Molded Tray.....	8471020052320572
------------------	------------------



Phone: 888.928.7297 • Fax: 815.464.3576

Tray Attachment Kit



DESCRIPTION	ITEM #
Tray Attachment Kit.....	055503

Trays

• **Description:**
Sold as a pair

• **Note:**
To attach a tray with Tray Attachment Kit, use one tray size larger.

Destako Clamps



DESCRIPTION	ITEM #
Destako Clamps.....	0555
1/4" Spacer.....	0555011
1/2" Spacer.....	055501
3/4" Spacer.....	055502

• **Description:**
Sold as a pair
• **Included Hardware:**
8 Bolts, 8 Nuts

• **Note:**
To attach a tray with Destako Clamps, use one tray size larger.

• **Description:**
Black ABS spacer for Destako clamps.
Sold individually.

Slide Brackets

Hardware



DESCRIPTION	ITEM #
1 1/2" Rise.....	0555094
Hardware Kit.....	0555090

• **Description:**
Steel brackets, sold as a pair

• **Related Products:**
Recommended with:
Tray Back Strap.....057201

• **Hardware Sold Separately**

• **Note:**
To attach a tray with Slide Brackets, use one tray size larger.

Velcro Tray Straps



DESCRIPTION	ITEM #
2" Wide Straps.....	0572

• **Description:**
Sold as a pair

Trays

- **Description:**
ABS material, sold as a pair
- **Dimensions:**
Height - 1 1/4"
Width - 2 3/8"
Length - 14"
- **Included Hardware:**
Adhesive velcro

Tray Channels



DESCRIPTION	ITEM #
Tray Channel.....	056405

- **Description:**
ABS material, sold as a pair
- **Included Hardware:**
4 Tall bolts
4 Short bolts
4 T-nuts

Tray "C" Channels



DESCRIPTION	ITEM #
1 1/8" Rise.....	056403
1 7/16" Rise.....	056404

- **Description:**
1" wide webbing with buckle and grommets

Tray Back Strap



DESCRIPTION	ITEM #
Tray Back Strap.....	057201

- **Material:**
Steel
- **Description:**
Fits most standard wheelchairs.

Ventilator Carrier



DESCRIPTION	ITEM #
Vent Carrier.....	80101